

COSMOS GRANITE & MARBLE  
501 S New Hope Rd. Raleigh, NC 27610 | Phone: 919.212.0303 | Fax: 919.212.0305

surface design - visibly different



[www.cosmosgranite.com](http://www.cosmosgranite.com)

# COSMOS DEVELOPMENTS

A wealth of natural beauty and everlasting durability has made natural stone one of the most widely preferred materials in the modern world. Our reputation as one of the finest US distribution companies in the industry remains at the forefront; accrediting much success to our long term relationships with our customers. We supply a wide variety of stones to the US market at affordable prices with a precision logistics plan. Established in 2005, Cosmos Granite has expanded from its inception in Raleigh, NC to ten US facilities. New developments include our own branded Quartz, Ethos Recycled surfaces and Sync Art sink lines.

## CONTENTS

COSMOS DEVELOPMENTS	2
A START TO FINISH PROCESS	4
THE GROWTH STORY	5
THE COSMOS PROMISE	6
INNOVATIVE PRODUCT MIX	7
COSMOS QUARTZ	8, 9
ETHOS RECYCLED GLASS	10
SYNC ART STAINLESS STEEL SINKS	11
SYNC ART PORCELAIN SINKS	12
LOCATIONS	13






## A START TO FINISH PROCESS

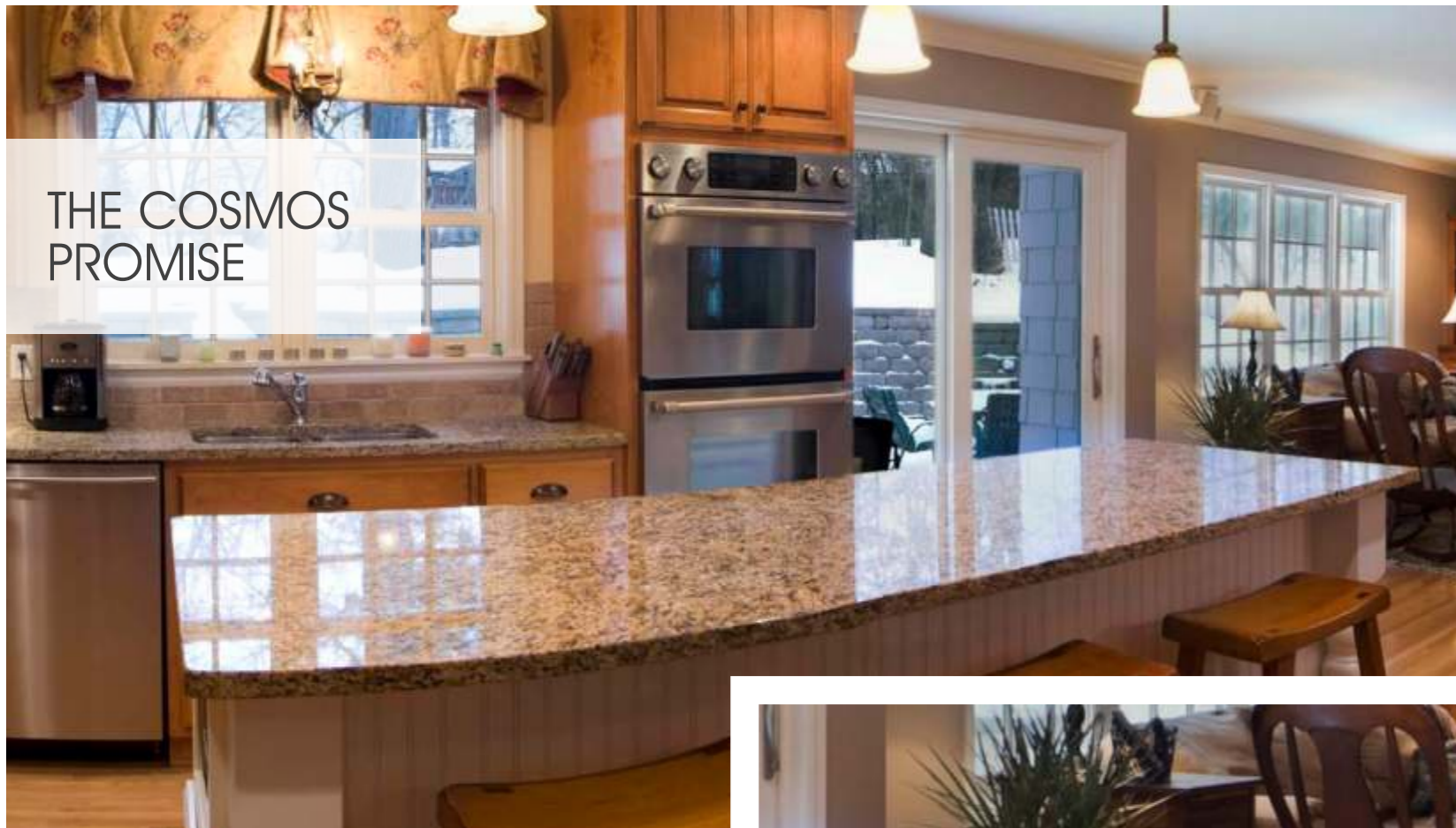
- ◆ **D2C**—Our Direct-to-Customer principle removes the middle man from our process, thus eliminating the occurrence of common industry problems such as inconsistent products, inaccurate information, price fluctuations and product shortages.
- ◆ **On-time global deliveries**—No overseas' supply chain issues due to our strong in-house logistics division.
- ◆ **Expert selection**—Our highly trained staff select raw products directly from quarries worldwide.
- ◆ **Flawless manufacturing**—Our state-of-the-art factory distinctively processes raw stone blocks into high quality slabs for our US distribution facilities.
- ◆ **Excellence**—Cosmos demonstrates consistency with supply, service, competitive pricing and A-Z knowledge of quality and unrivaled material in the industry.



## THE GROWTH STORY

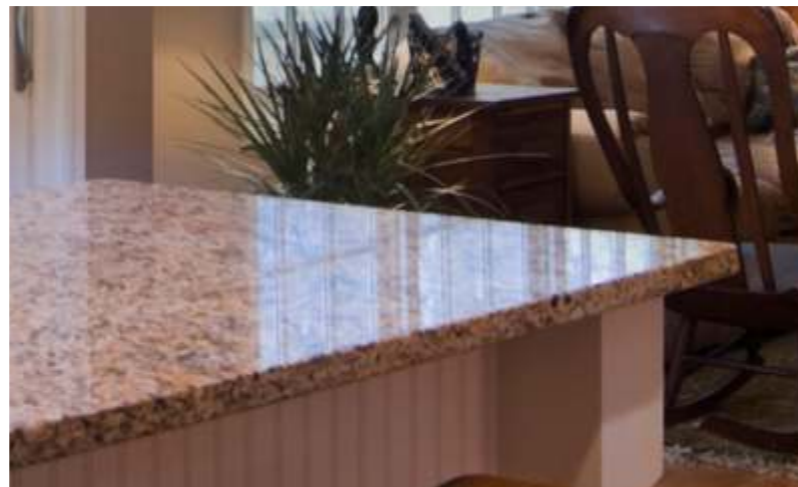


Cosmos Granite kick started its operations from a 15000 Sq Ft facility in Raleigh, NC in 2005. During the years from 2008 and 2012 Cosmos Granite established 3 more facilities in Charlotte, NC, Greensboro, NC, Washington, DC. Between the years 2013 and 2017 Cosmos Granite established 4 more facilities in Nashville, TN, Dallas, TX, Charleston, SC and Boston, MA. In 2019, Cosmos Granite team acquired International Granite & Marble, a 70-year old family owned company with 5 facilities in CT, NJ, PA, GA & TX. As new product offerings are a priority, we are innovatively sourcing new stones and alternate textures. Recent additions to our offerings are our own branded quartz, recycled glass slabs and sink lines. Besides the reinforcement of an industry-leading warranty, these products also convey new ideas coupled with prices unattainable in today's market. Additional product lines are steadily progressing with a proposed launch for the near future.



## THE COSMOS PROMISE

- ◆ Competitive pricing – Direct-to-Customer approach
- ◆ Vast range of textures and colors
- ◆ Error-free processing
- ◆ Innovative additions to product line
- ◆ Global procurement network
- ◆ Ability to meet any volume; ample supply and demand
- ◆ Well-stocked warehouses year-round
- ◆ Shipment to any part of the US



## INNOVATIVE PRODUCT MIX

- ◆ Granite
- ◆ Marble
- ◆ Quartzite
- ◆ Onyx
- ◆ Lime Stone
- ◆ Soap Stone
- ◆ Travertine
- ◆ Cosmos Quartz
- ◆ Ethos Recycled Glass
- ◆ Stainless Steel sinks
- ◆ Porcelain Sinks



# COSMOS QUARTZ



Quartz, the second most abundant mineral in the Earth's continental crust and the fourth hardest mineral known this day and age, is an essential ingredient in Granite. Remaining consistent through our practice of bringing something new to the table with each product offering, we have introduced Cosmos Quartz, a revolutionary Quartz surfacing—achieved by combining the latest polymeric technology with quartz crystal. A perfect selection for both residential and commercial projects, Cosmos Quartz is the most reputable choice for any indoor application requiring an attractive, moisture-proof and highly durable surface.



To simplify the selection process we have grouped all of our quartz offering into simple price categories. All slabs are a minimum size of 119”x63”, eliminating the need to purchase additional material due to poor yield, thus resulting in lower material cost. The mixture of hi-tech polymers and natural quartz provides unparalleled hygiene on surfaces. Committed to delivering what, where, and when you need it, we have a huge inventory of all the top selling colors in all of our regions.

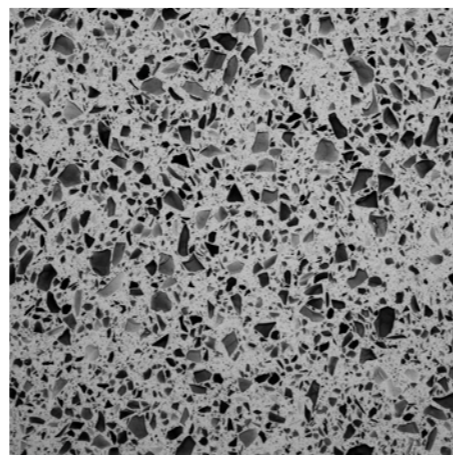
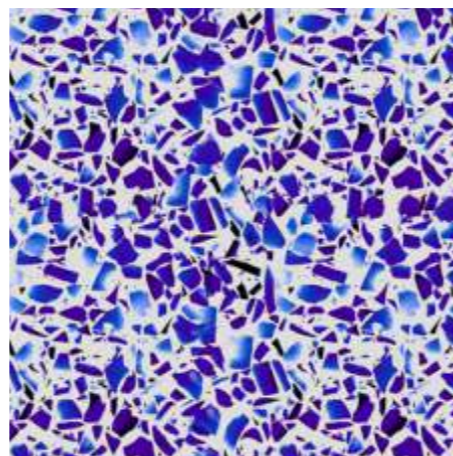
We also provide cut-to-size projects for both large and small commercial developments. Investment by an industry leading residential and commercial warranty will give you peace of mind. With no minimum purchase quantity, delivery fee or unreasonable return charges, our pricing will save you money; not only on precious yield, but on the material itself beginning with your first purchase.





ETHOS  
RECYCLED  
GLASS

In 2014, Cosmos will introduce an upgraded, environmentally friendly countertop material in a sophisticated color palette made from recycled glass. Unlike other recycled glass countertops, our product does not need to be sealed and is virtually maintenance-free. Furthermore, because of its proprietary resin binder, Ethos performs better than other recycled surfacing products. Ethos eco-friendly surfaces by Cosmos is a superior product and offers the option of living green.



SYNC-ART  
STAINLESS STEEL  
SINKS



All Cosmos Sync Art Stainless Steel sinks are 304 Stainless Steel, UPC Coded and Corrosion Resistant. With a tensile strength of up to 250,000 PSI, 304 stainless steel has been used in aircraft, architectural support and railroads.

Cosmos sinks bear a Universal Product Code verifying each and every sink is quality inspected for the highest caliber materials, quality and craftsmanship. Cosmos sinks have the highest stainless steel corrosion resistance.





**SYNC-ART  
PORCELAIN  
SINKS**



Using antibacterial glazing technology, the basin surface is always smooth, bright and clean. With the advantages of abrasion resistance and anti-staining, Sync Art porcelain sinks are easy to clean. Firing our premium ingredients including quartz, feldspar, and iron at over 3,300 degrees Fahrenheit produces Sync Art's luxurious porcelain sinks that will endure the test of time.



## LOCATIONS

**RALEIGH** (Corporate Headquarters)  
501 S New Hope Rd.  
Raleigh, NC 27610  
P: 919.212.0303 F: 919.212.0305

**BOSTON, MA**  
205 Flanders Road,  
Westborough, MA 01581  
P: 508-329-5584,85 F: 508-329-5586

**CHARLOTTE, NC**  
1440 Westinghouse Blvd,  
Suite G  
Charlotte, NC 28273  
P: 704-248-8702 F: 704-248-8712

**GREENSBORO, NC**  
4300 Federal Dr,  
Greensboro, NC 27410  
P: 336-882-2282 F: 336-882-2283

**WASHINGTON, DC**  
3900 Stonecroft Blvd Suite B  
Chantilly, VA 20151  
P: 703-996-4484 F: 703-953-3557

**CHARLESTON, SC**  
3235 Industry Drive,  
North Charleston SC 29418  
P: 843-552-7910 F: 843-552-7912

**DALLAS, TX**  
2244 Luna Rd, Suite 100  
Carrollton, TX 75006  
P: 214-377-5969 F: 214-377-5038

**NASHVILLE, TN**  
278 Mason Road,  
LaVergne, TN 37086  
P: 615-501-0611 F: 615-501-0639